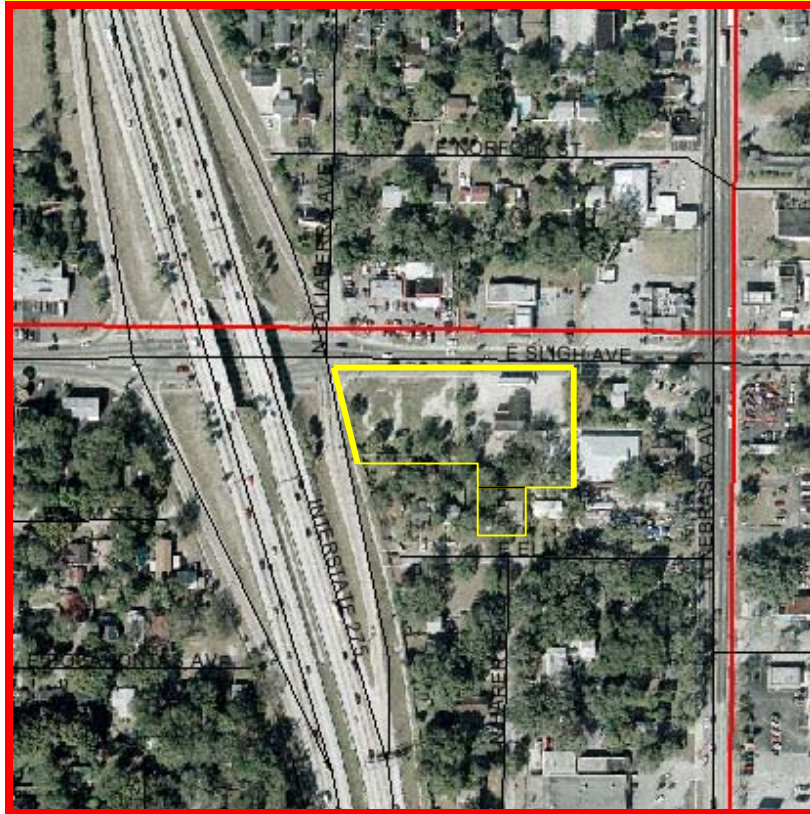


FOR SALE

**801 & 813 E. SLIGH AVE.
Tampa, Florida**



PRICE: \$675,000
BUILDING SQ. FT.: 1,421
LOT SIZE: 55,757 SQ. FT.
ZONING: CG
ROAD FRONTAGE: 430 + FT.
2005 TAXES: \$7,553.89

- **HIGH VISIBILITY LOCATION AT INTERSTATE 275 & SLIGH AVE.**
- **EXISTING BUILDING BUILT IN 1968 WITH 2 BAYS**

For Further Information, Please Contact:

MICHAEL B. PRESTON, CCIM

**Preston & Farley, Inc.
1057 S. Clearview Avenue
Tampa, Florida 33629
Office: (813) 254-3111 Ext. 318
Website: www.prestonfarley.com**



Information contained herein has been obtained from the owner of the property or other sources that we deem reliable. We have no reason to doubt its accuracy, but we do not guarantee it.